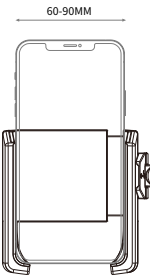


85 MM

60 MM

PB11 Mobile
phone holder
instruction manual
2025 edition
(AD/ET/G)

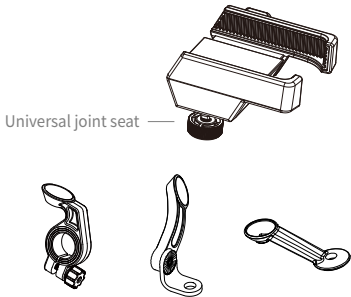


A. This instruction is suitable for PB11 phone holders.
B. More use problems and skills, please ask the local distributors.

Patented products,quality assurance

-1-

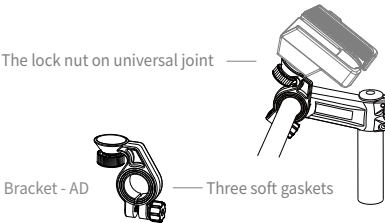
1. Connect the phone holder mount with different brackets



Model number: PB11
This phone holder edition can be connected with different brackets, to be installed on different position for different vehicles. And it can make phones 360° adjustment.More details please read the 3th to the 4th page of the instruction manual.

-2-

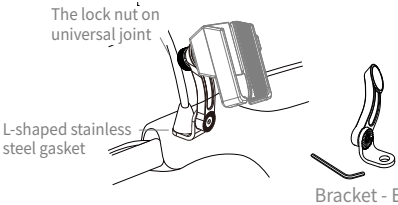
2a. Install the phone holder on the handlebar of vehicles



Model number: PB11-AD
Suitable vehicles: bicycles, motorcycles, electric vehicles
Install position : handlebar (diameter range : 22-31.8mm)
(1). Release the screw.
(2). Choose the right gasket according to the handlebar diameter.
(3). Install the bracket-AD on the handlebar and lock the screw.
(4). Adjust angle of the phone holder and lock the nut on the universal joint.

-3-

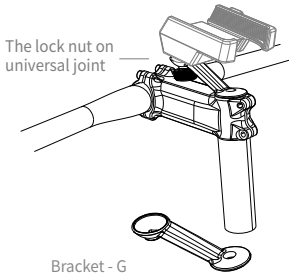
2b. Install the phone holder on the rear-view mirror screw hole position of vehicles



Model number: PB11-ET
Suitable vehicles: motorcycles, electric vehicles
Install position: install on the rear-view mirror screw hole position(the diameter of the rear-view nror screw: 6mm,8mm,10mm)
(1). Loosen the rear-view mirror and remove it from the vehicle.
(2). Place the L-shaped stainless steel gasket in the screw of the removed rear-mirror.
(3). Re-install the rear-mirror with L-shaped stainless steel gasket and lock it.
(4). Adjust the angle of the phone holder and lock the universal joint nut.

-4-

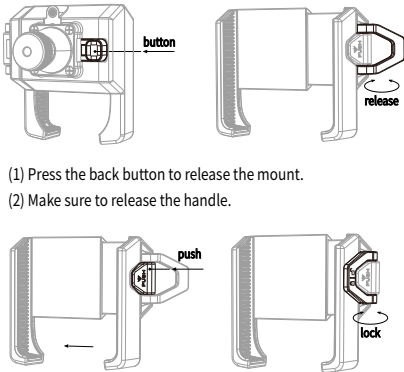
2c. Install the phone holder on the bicycle headset



Model number: PB11-G
Suitable vehicles: mountain bicycles, road bicycles
Install position: install on the headset of bicycles
(1). Remove the screw on the headset of bicycles.
(2). Instead of the headset by bracket-G and lock it.
(3). Adjust the angle of the phone holder and lock the universal joint nut.

-5-

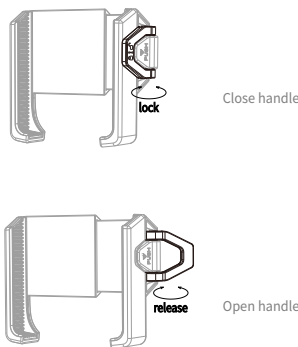
3.First use



(1) Press the back button to release the mount.
(2) Make sure to release the handle.
(3) Putting the mobile phone on the mount and Press the side button to fit the size of the phone.
(4) Close the handle to lock the phone.

-6-

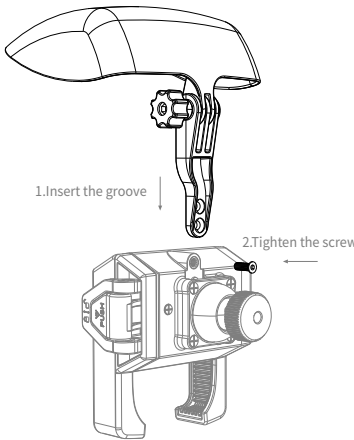
4.Daily use



Close the handle to lock the phone;
Open the handle to remove the phone easily.

-7-

5.Sun hat for choice



-8-

名称	PB11/AD ET G/说明书/250508
尺寸	85*60 (mm)